

Smart LED Pocket Cinema Projector with JBL Speakers

ViewSonic® See the difference™ 

M1 mini Plus



- Smart stand that allows for ceiling projection
- Swappable top plates for your everyday mood
- JBL speakers for sensational audio
- Built-in battery for fun on the go
- Smart Wi-Fi & Bluetooth connectivity
- Instant power on to enjoy your favorite shows right away

The ViewSonic M1 mini Plus is a smart pocket cinema which delivers convenient audiovisual entertainment anywhere. With the light weight, ultra-mini size and swappable colored top plate, it serves as a personal pocket cinema for your everyday life. The built-in battery, JBL speaker, and the ability to be charged by a power bank, allows for easy outdoor or on the go use. The adjustable stand offers flexible projection angles that can satisfy many viewing needs - even ceiling projection. More fun can be accessed with Wi-Fi and Bluetooth connectivity - wireless casting from smart devices, built-in content streaming, and audio amplification.



•
•
•



Smart Stand

Offering you flexible projection angles - even ceiling projection



Swappable Colored Plates

Mint, yellow, and grey to suit your everyday mood



JBL Speakers for a Room-filling Sound

Embedded with JBL speakers, you may hold the coolest movie night or music party whenever and wherever you want with sensational audio boosted by JBL right out of the box.

SOUND BY





Cinematic Experiences On-The-Go

Watch two episodes of your favorite TV series back-to-back anywhere without running out of battery.
Still not enough? Easily extend your playtime by sharing the power bank you use to charge your smartphone.



1.5 hrs

In Eco mode



True-to-life Colors, Fill You with Wonder

True-to-life colors offered by ViewSonic's proprietary Cinema SuperColor+™ Technology with 125% Rec.709 give you the vivid touch and feel for rich emotional pleasure.





Streaming Heaven

Say goodbye to cable clutter and external devices. The built-in app center caters to all your entertainment needs. Enjoy your favorite apps from the projector to the big screen or download them - all via Wi-Fi.

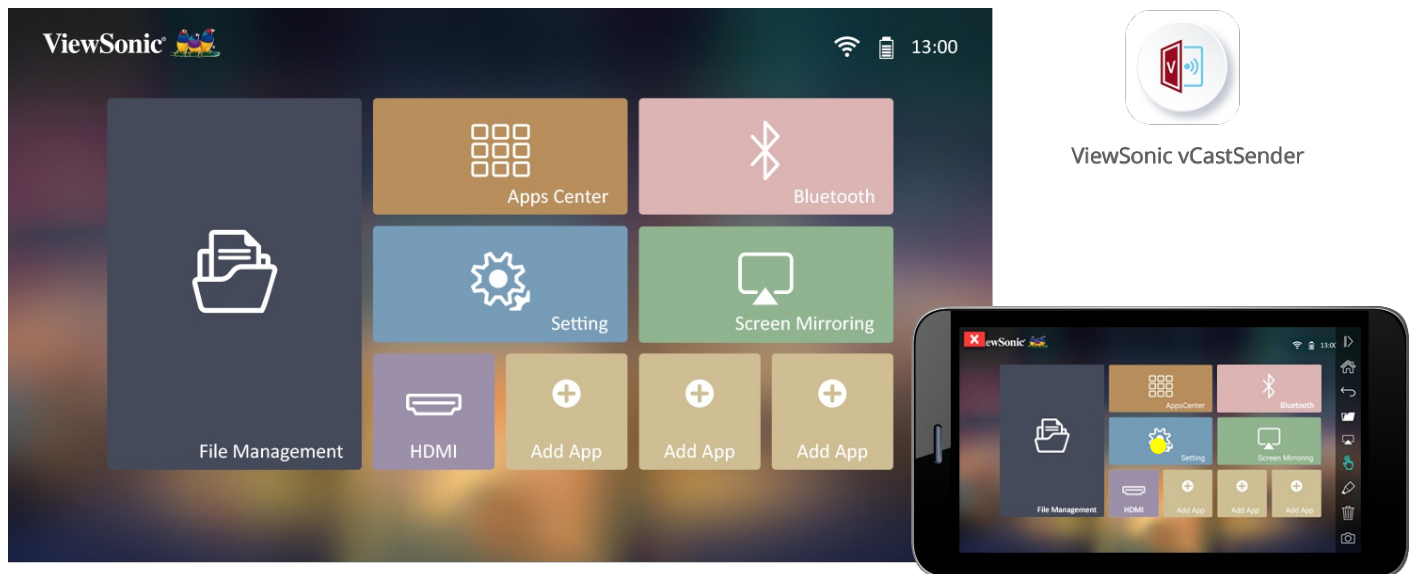


**The Apps herein are for demo purpose only and are not preinstalled in the Product. The Apps and their trademarks or logos are the properties of their respective owners, unaffiliated with ViewSonic, and not sponsors or endorsers of*

the Product.

Intuitive Touch Control with your phone

Now you can turn your mobile device into an alternative powerful remote control – intuitive touch control, easy typing, and simple annotation on the big screen. Simply download the ViewSonic vCastSender app on your phone, make sure your phone and the projector are connected to the same Wi-Fi network, and pair them up in the app to get started.



[Learn more](#)

- 1.
- 2.



Bluetooth for Flexible Audio Needs

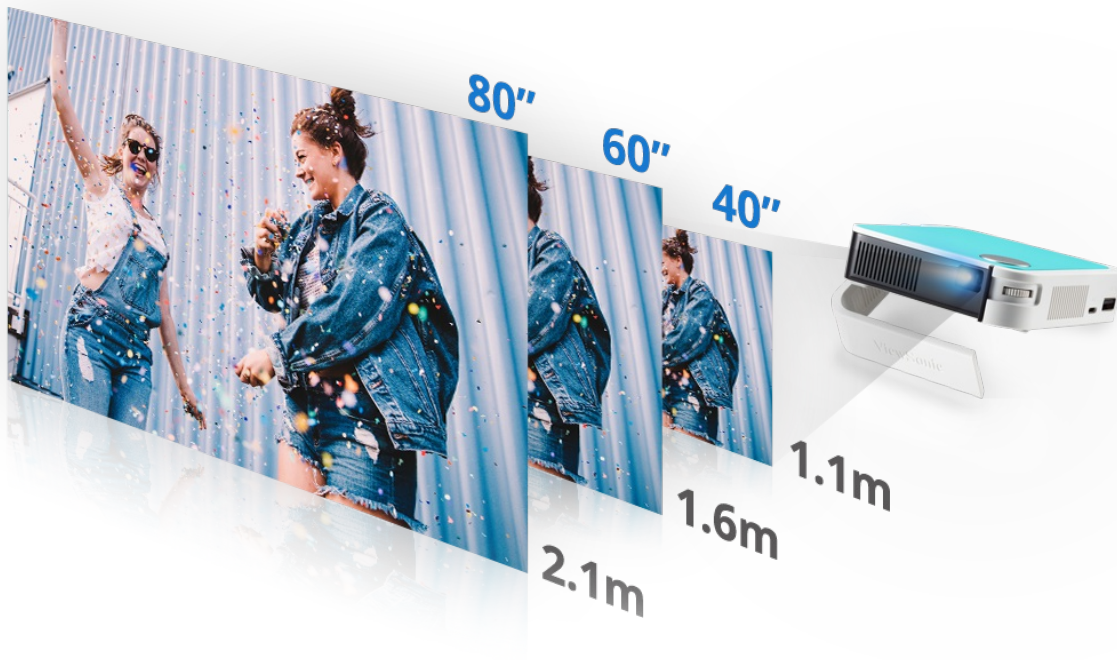
Turn the M1 mini Plus into a Bluetooth speaker to play your favorite music in high quality and amplify the pleasure.

Or the other way around, output the audio of a thrilling game from the projector to your own Bluetooth headphones, immersing yourself in your own big screen fun.



Instant Power On to Enjoy Your Favorite Shows Right Away

Tired of staring at a blank screen waiting for the display to get started? Set up your own cinema in an instant with the M1 mini Plus and enjoy your favorite shows right away.



Go Big Even in Small Spaces

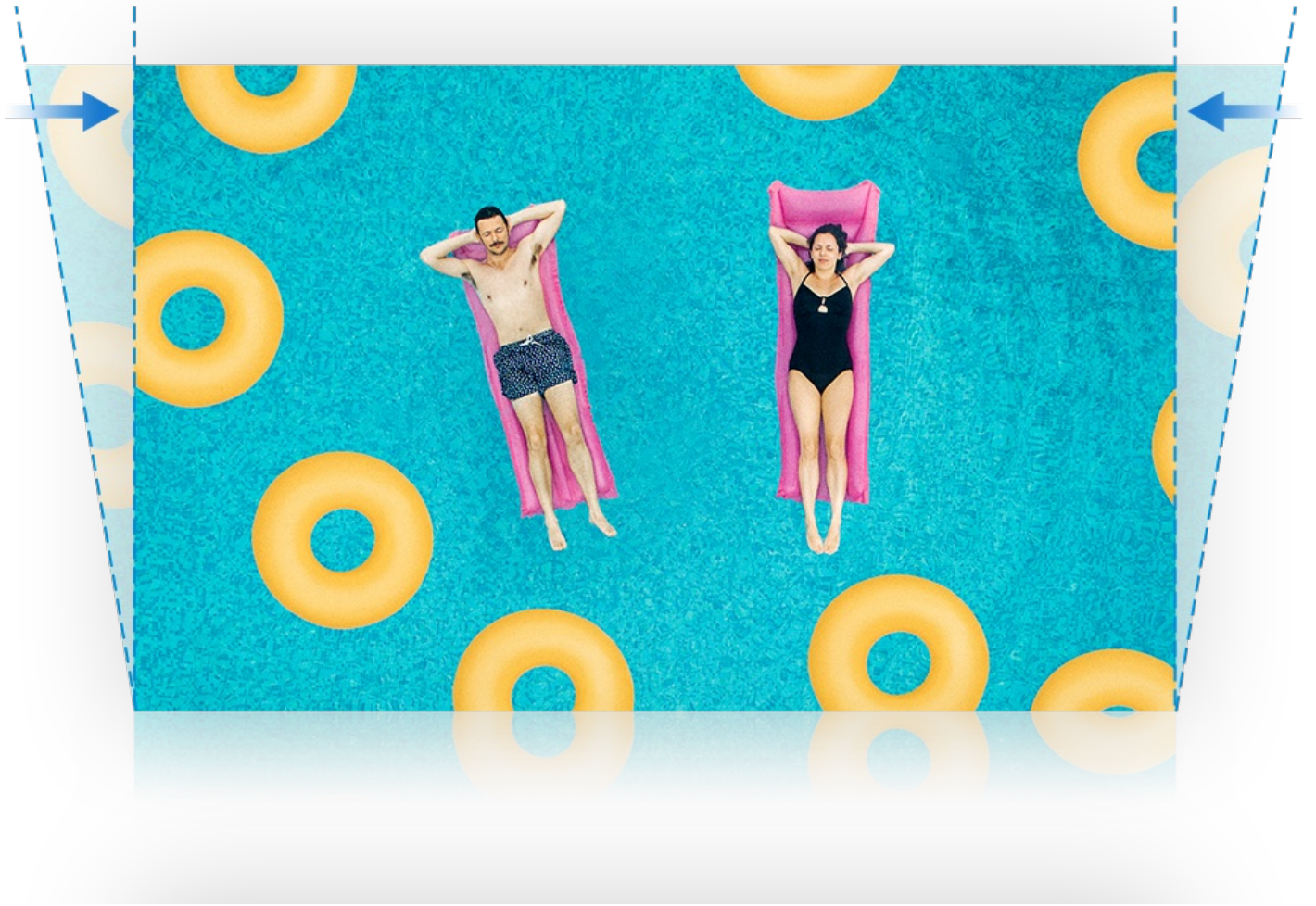
Scale up the excitement with a screen size easily made larger than a TV - even in your own room, dorm or any other small spaces. With a 1.2 throw ratio, the M1 mini Plus is capable of projecting a 40" screen size from only 1.1 m away.



Plug & Play

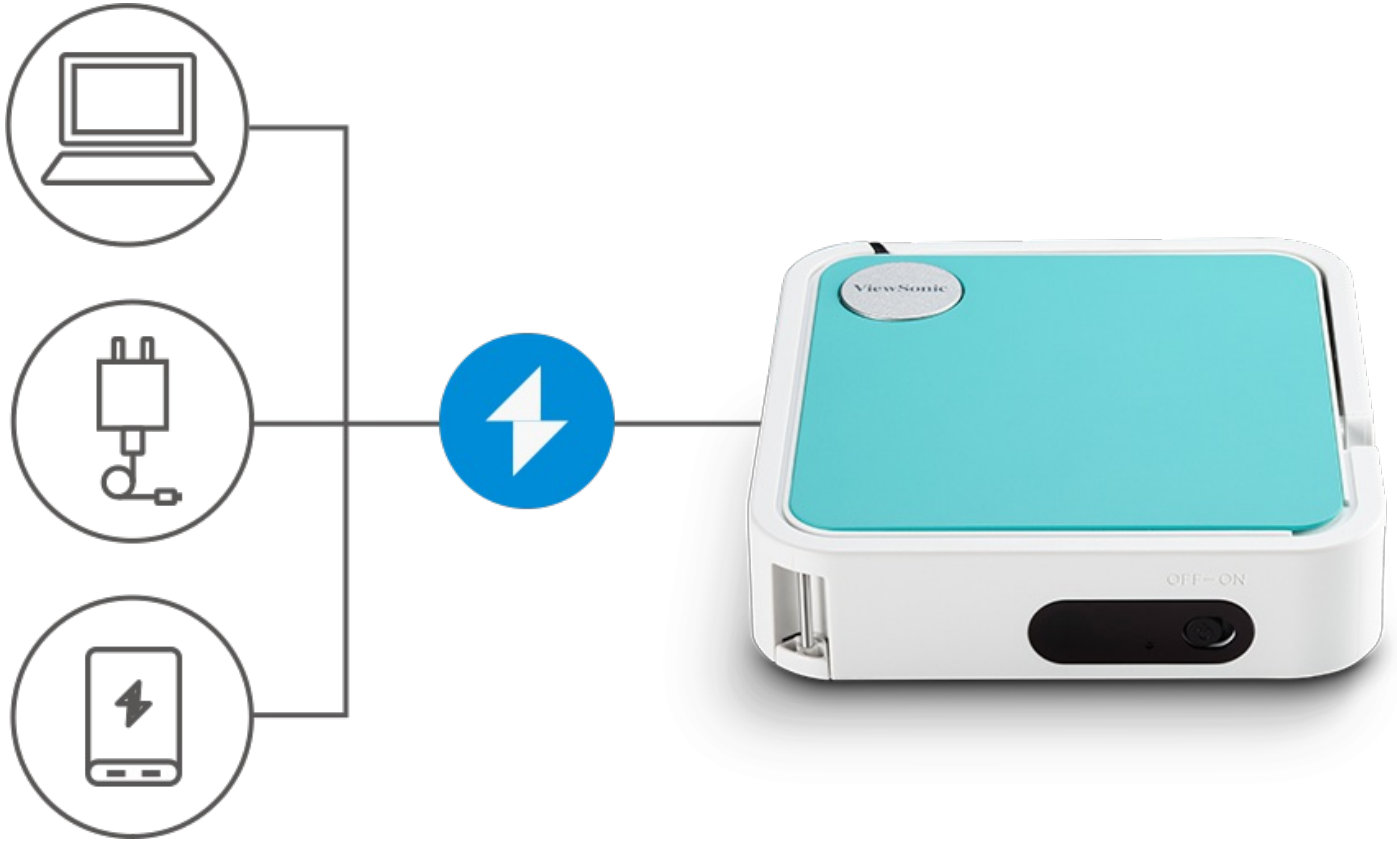
Never find yourself lost in a jungle of complicated I/O ports. Simply plug in a USB flash drive or HDMI cable connected to your device, or save your favorite content directly onto the projector's 4GB local storage, and start enjoying movies, photos and music with ease.





Perfectly Proportioned Images Every time

No matter how you tilt the projector, up or down, the Auto V Keystone correction ensures you always get the projection in an upright shape, with no need for manual adjustments.

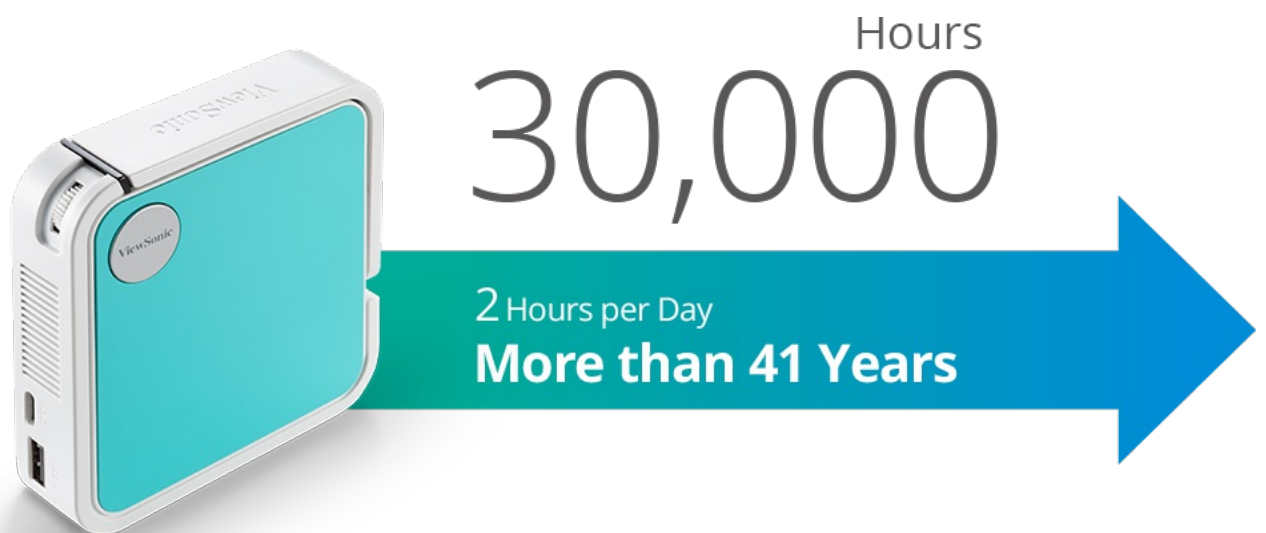


USB Type-C for Quicker and Easier Recharging

Resume entertainment within a 50%* shorter period of wait by using the USB type-C adaptor provided. You can also easily recharge the M1 mini Plus by connecting to many of the devices you already have, like a power bank* or PC.

**Compared to typical 5V/1A adaptors on the market.*

**To power on the projector, the power bank should be at least 18W (9V/2A) and support Quick Charge (QC) protocol output.*



Your Supportive Friend for Endless Fun

Advanced LED technology (mercury-free) offers a greener, filter-free and virtually maintenance-free projector solution. The LED light source has a life of up to 30,000 hours, which equates to 2 hours usage per day for over 41 years.

**30,000 hours in Eco Mode*

Say Goodbye to Irritating Noise

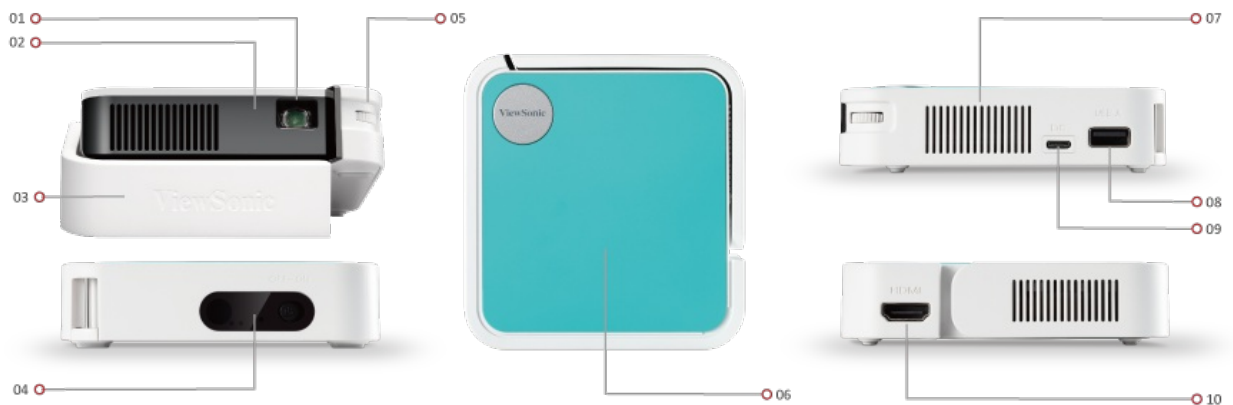
With a lower than whisper fan noise of 25dB, you can be fully immersed in the viewing experience.

A diagram illustrating the concept of reflective light. A light beam enters from the top left, hitting a screen. The screen displays a colorful scene with various spheres. A blue arrow points from the light source to a green sphere on the screen. From this green sphere, several grey arrows labeled 'Reflective light' point outwards, representing light reflecting off the screen towards the viewer. The scene on the screen includes a yellow sphere, a blue sphere, and a green sphere. The background of the screen is a gradient of blue and green. The entire scene is set within a 3D perspective of a screen and a surface below it.

Reflective light

Eye Care

Utilizing reflective light, which bounces off the wall or projector screen before hitting your eyes, the projector makes the viewing experience virtually blue light free, less invasive to your sight and reduces eyestrain over prolonged viewing periods.



1. Lens
2. Front IR
3. Smart Stand
4. Power Switch
5. Focus Ring
6. Swappable Top Plates
7. Speaker
8. USB Type A
9. USB Type C (DC in)
10. HDMI

Technical Specifications

Specification	Projection System	0.2" WVGA	
	Native Resolution	854x480	
	Brightness	120 (LED Lumens)	
	Contrast Ratio	500:1	
	Display Color	1.07 Billion Colors	
	Light Source Type	LED	
	Light Source Life (hours) with Normal Mode	up to 30000	
	Lamp Watt	RGB LED	
	Lens	F=1.7, f=7.5mm	
	Projection Offset	0+/-5%	
	Throw Ratio	1.2	
	Optical Zoom	Fixed	
	Image Size	24"-100"	
	Throw Distance	0.64m-2.66m, (39" @1m)	
	Keystone	+/- 40° (V)	
	Audible Noise (Normal)	26dB	
	Audible Noise (Eco)	25dB	
	Local Storage	Total 8GB, (4GB available storage)	
	Input Lag	35ms	
	Resolution Support	VGA(640 x 480) to FullHD(1920 x 1080)	
	HDTV Compatibility	480i, 480p, 576i, 576p, 720p, 1080i, 1080p	
	Horizontal Frequency	15h-102kHz	
	Vertical Scan Rate	23-120Hz	
	Input	HDMI	1
		Audio-in (Bluetooth)	1 (BT4.2)
		USB Type A	1, (USB2.0 Reader)
		Wifi Input	1 (5Gn)
Output	Audio-out (Bluetooth)	1 (BT4.2)	
	Speaker	2W Cube	
	USB Type A (Power)	1, (USB2.0 - 5V/1A, , share with USB A Input)	
Others	Power Supply Voltage	Power adaptor: , USB Type C, Input: 5V/4A, , Battery:, 5000mAh 3.7V, (1.4hrs@Normal, 1.5hrs@Eco)	
	Power Consumption	Normal: 20W , Standby: <0.5W	
	Operating Temperature	0~40°C	
	Net Weight	0.28Kg	
	Dimensions (WxDxH) with Adjustment Foot	110x104x27mm	
	OSD Language	English, French, Spanish, Thai, Korean, German, Italian, Russian, Swedish, Dutch, Polish, Czech, T-Chinese, S-Chinese, Japanese, Turkish, Portuguese, Finnish, Indonesian, India, Arabic, Vietnamese, Greek, Total 23 languages	
Standard Accessory	Remote Control	1	
	QSG	1	
	Swappable plate	3	

